



Technical Information:

The Hudson Village Theatre is an intimate proscenium theatre with 148 seats on a rake. Seating is not flexible.

STAGE:

Stage Space: 21'6" wide by 19'1" deep.
Stage Space Past Column on Right Side: 5'10" wide by 3'6" deep
Stage Space Past Column on Left Side: 4' wide by 3'6" deep
Depth from front row to front of stage: 2'5"
Ceiling Height: TBA
Circuits: 96
Floor: Black Plywood
Loading: Loading Entrance Available.
4'7" Wide by 6'7" High loading doors,
followed by a 3' wide set of stairs with
metal open railing.
3' wide by 6'11" side doors available as
well.

Dressing Rooms: 2 Dressing Rooms for 4 People each. Both rooms contain make-up mirrors, clothes racks, bathrooms, and can access a shower. Our dressing rooms are below the stage and accessible through a stairwell.

CONTROL BOOTH:

Lighting:

Console: Strand Lighting LBX 96 Canal.
Optical Splitter: 1 – Chauvet Data Stream 4 (3 outputs available 3 pin or 5 pin)
Dimmers: 2 Applied Electronics SA 12/1200 12 channel 1.2 Kw per channel
Special: 1 – 16" mirror ball with 3rpm motor
House lights: Dimmable, controlled by light switch
Touring hook-up: Yes, extra dimmers only. Max 24/2400w

Lighting instruments:

- 8 – ETC source 4 jr. zoom 25/50 575w
- 2 – Colortron Leko 20” 1000w
- 2 – Colortron Leko 40” 750w and 575w (can change to 30’)
- 8 – ETC source 4 pannel 750w
- 2 – Colortron 6” Fresnel 1000w
- 19 – LCG1212 LEDS 144w (12 with permanent barn doors)* run with 3 pin dmx
- 2 – Chauvet Intimidator spot 355Z IRC* run with 3 pin dmx
- 4 – Barn Doors

Gels:

200+ stock*

Sound:

Console:

- 1 – Behringer x32 – 32 input 16 output
- 1 – Yamaha EMX 2000

Equalizers:

- 2 – DBX 215s dual channel 15 band EQ

PA:

- 4 - top. Yorkville Paraline PSA1 800w
- 4 - sub. Yorkville Paraline PSA1s 1200w

Amplifiers:

- 1 – Yorkville Audiopro 1200 250 watts per channel into 8ohms; damping factor of 600
- 2 - Yamaha DXR 10
- 4 - LTO. TX 112

Monitors:

- 2 – Yamaha DXR10 powered speakers 1100 watt Dynamic output 700 watt continuous output
- 2 – Yorkville performance series Y115 passive 200 watt
- 4 – Alto Truesonic TS112 passive 200 watt continuous

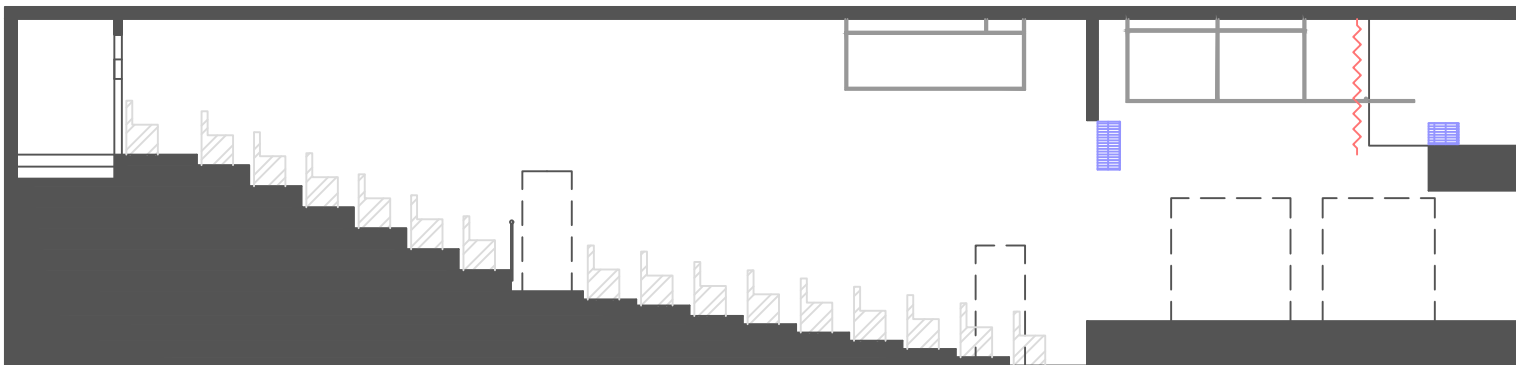
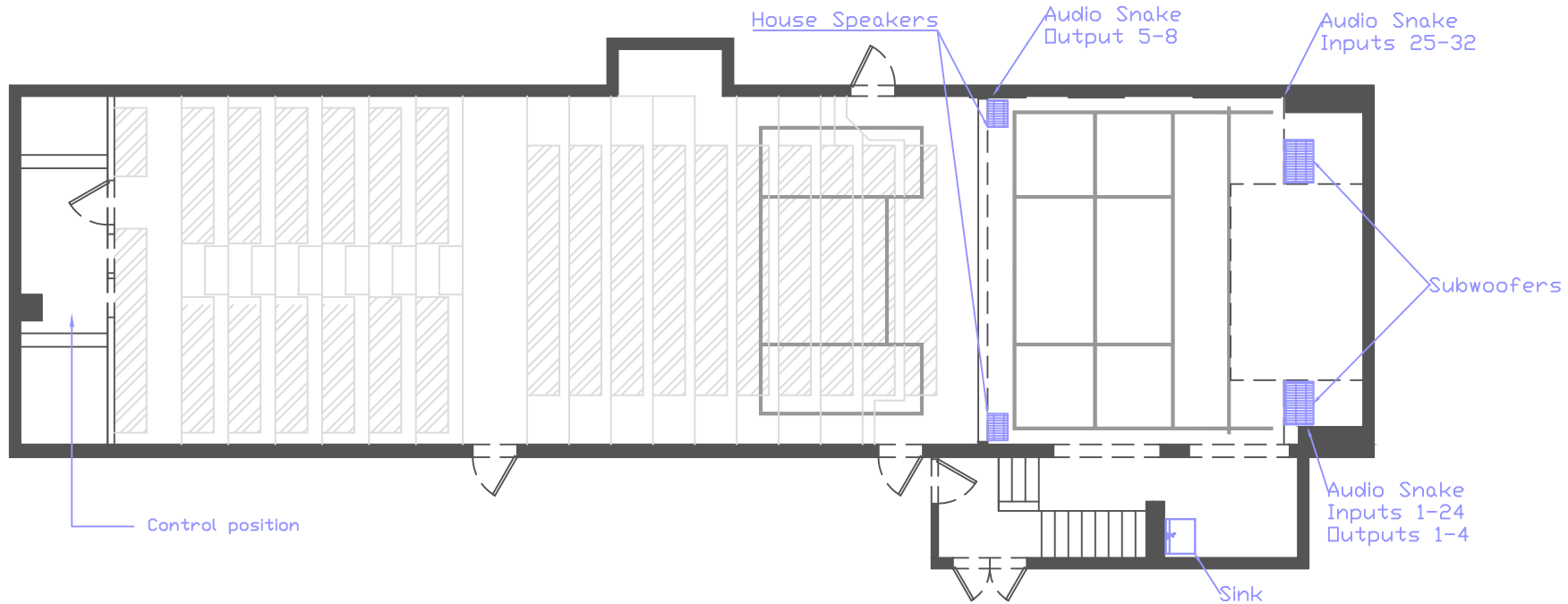
Playback:

- 1 - Denon DND 4500






Effects:

X32 Beringher Plug Ins

Microphones:	7 - Micro senheiser E835 (Dynamic Cardlod) 1 - Shure SM58 (Dynamic Cardlod) 1 – Shure SSSH (Dynamic Cardlod) 2 AKG 300B preamps with ck91 capsule (Condenser cardlod)
Mic Booms:	9 – tall booms (4 with clip) 1 – Straight boom (no clip)
Direct Box:	1 Digiflex DSPDI 2 channel passive DI
Audio Snakes:	2 – 100’ 4 channel (1 run to stage as outputs) 1 – 100’ 8 channel (run to stage as inputs) 1 – 100’ 24 input 4 output (run to stage)
CD player: player	1 – Denon DJ DN-D4500MK2 dual CD



Key

- Venue 
- Audience 
- Equipment 
- Lighting Grid 
- Masking 

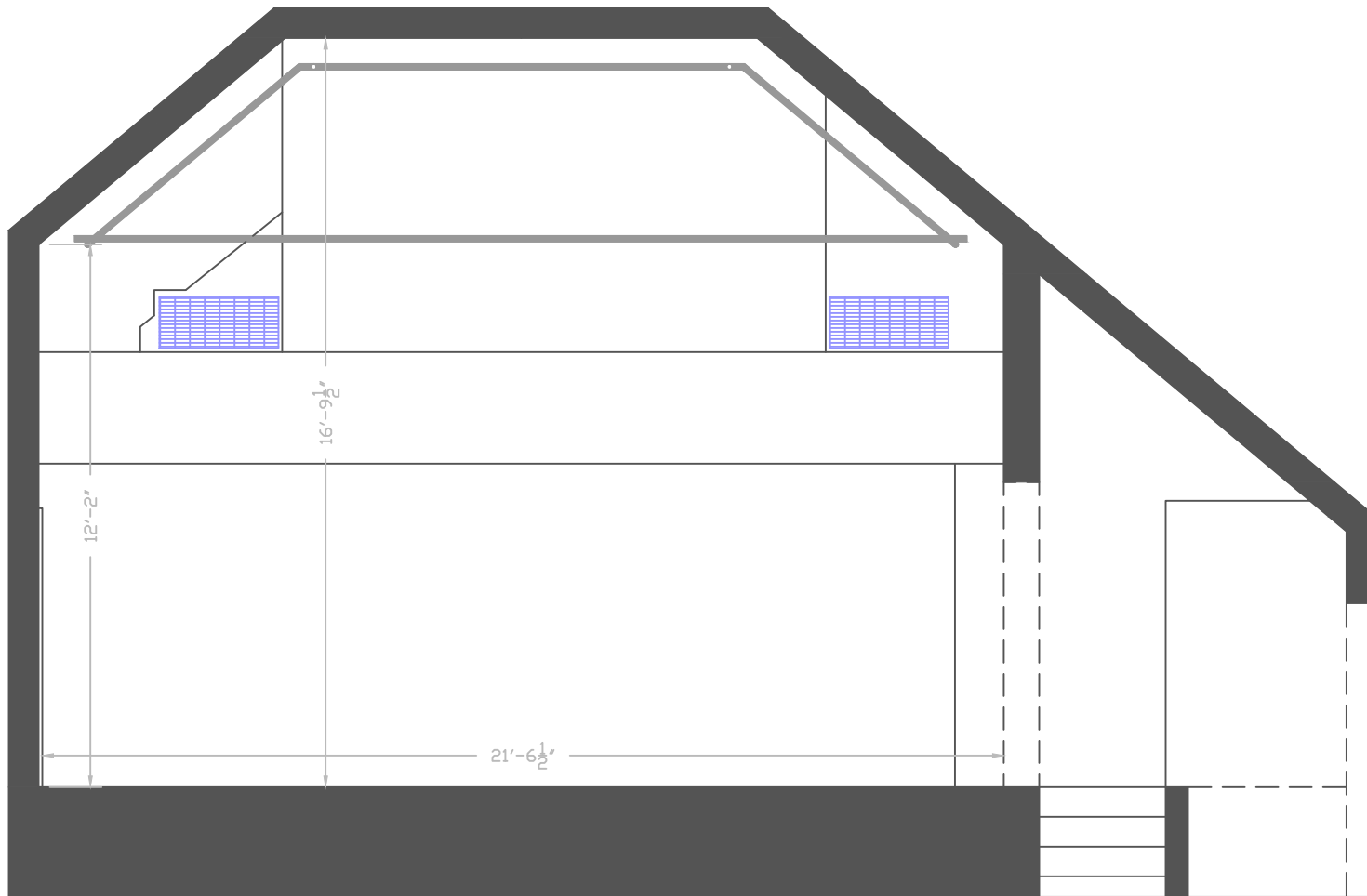
Hudson Village Theatre

Ground and Cross Section

Plan By: Robert Moody

modyrk4@gmail.com

scale
3/32"=1'0" Page 1 of 7



Hudson Village
Theatre

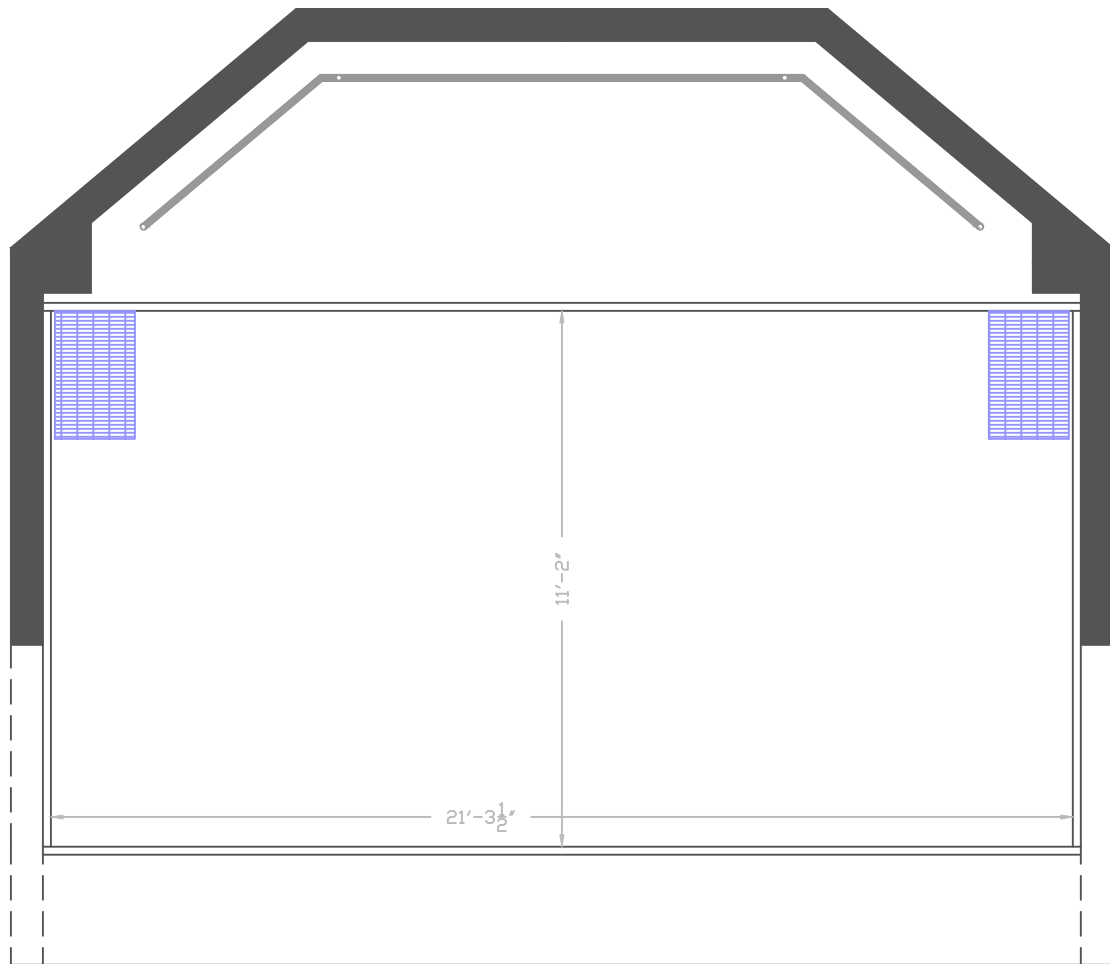
Onstage Front View

Plan By: Robert Moody

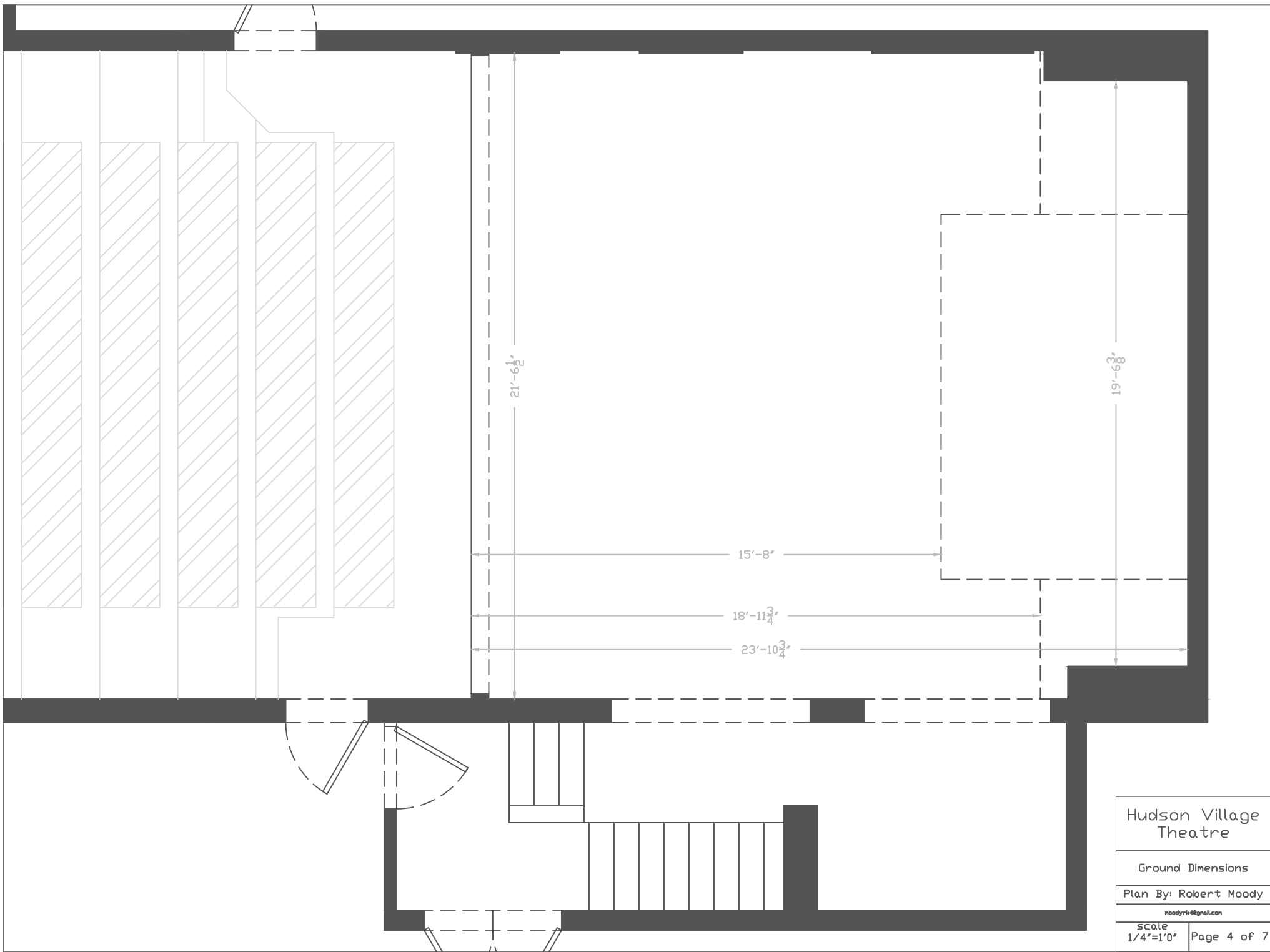
moodyrk4@gmail.com

scale
1/4"=1'0"

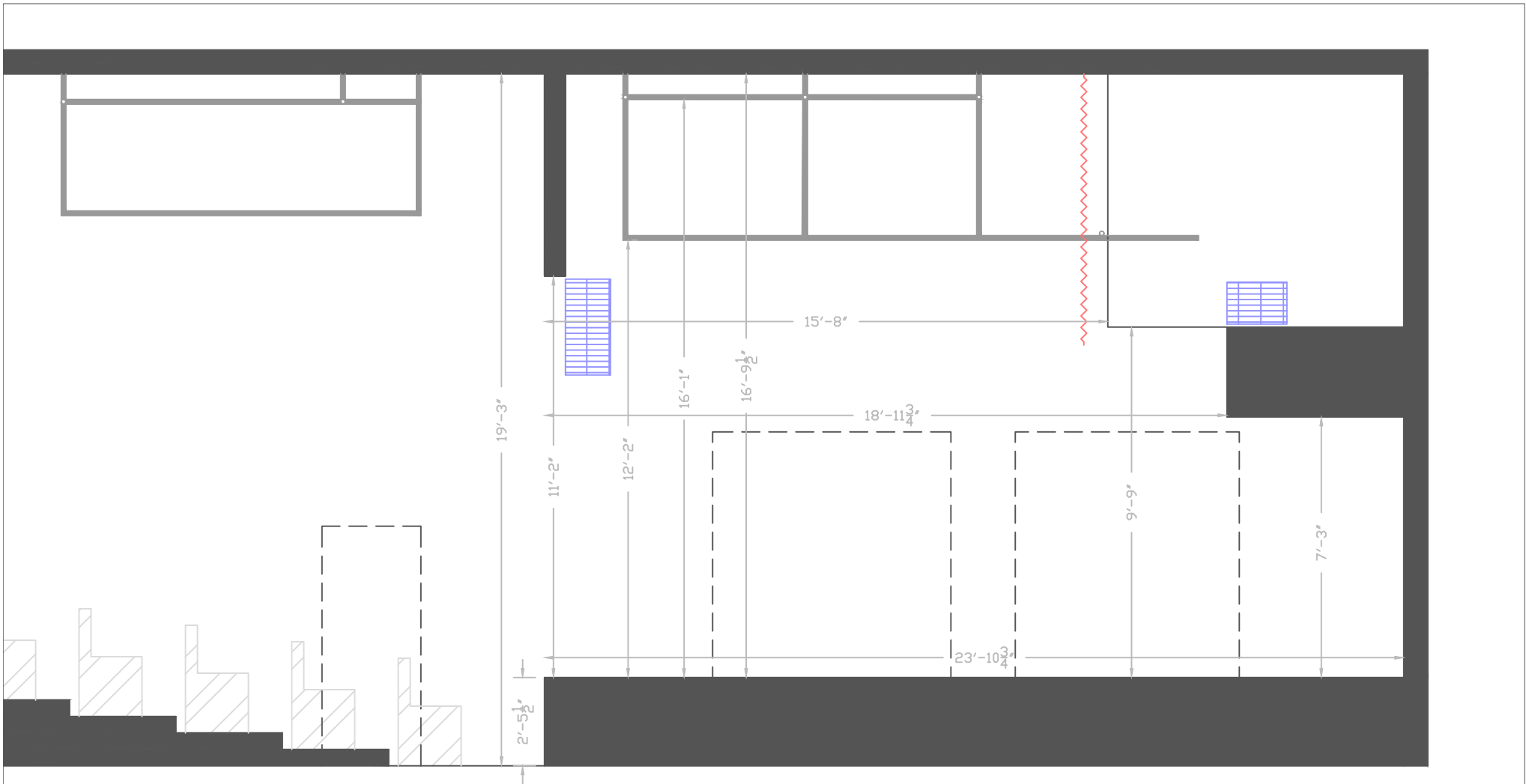
Page 2 of 7



Hudson Village Theatre	
In House Front View	
Plan By: Robert Moody	
<small>moodyrk4@gmail.com</small>	
scale 1/4"=1'0"	Page 3 of 7



Hudson Village Theatre	
Ground Dimensions	
Plan By: Robert Moody	
moodyr14@gmail.com	
Scale	Page 4 of 7
1/4"=1'0"	



Hudson Village Theatre

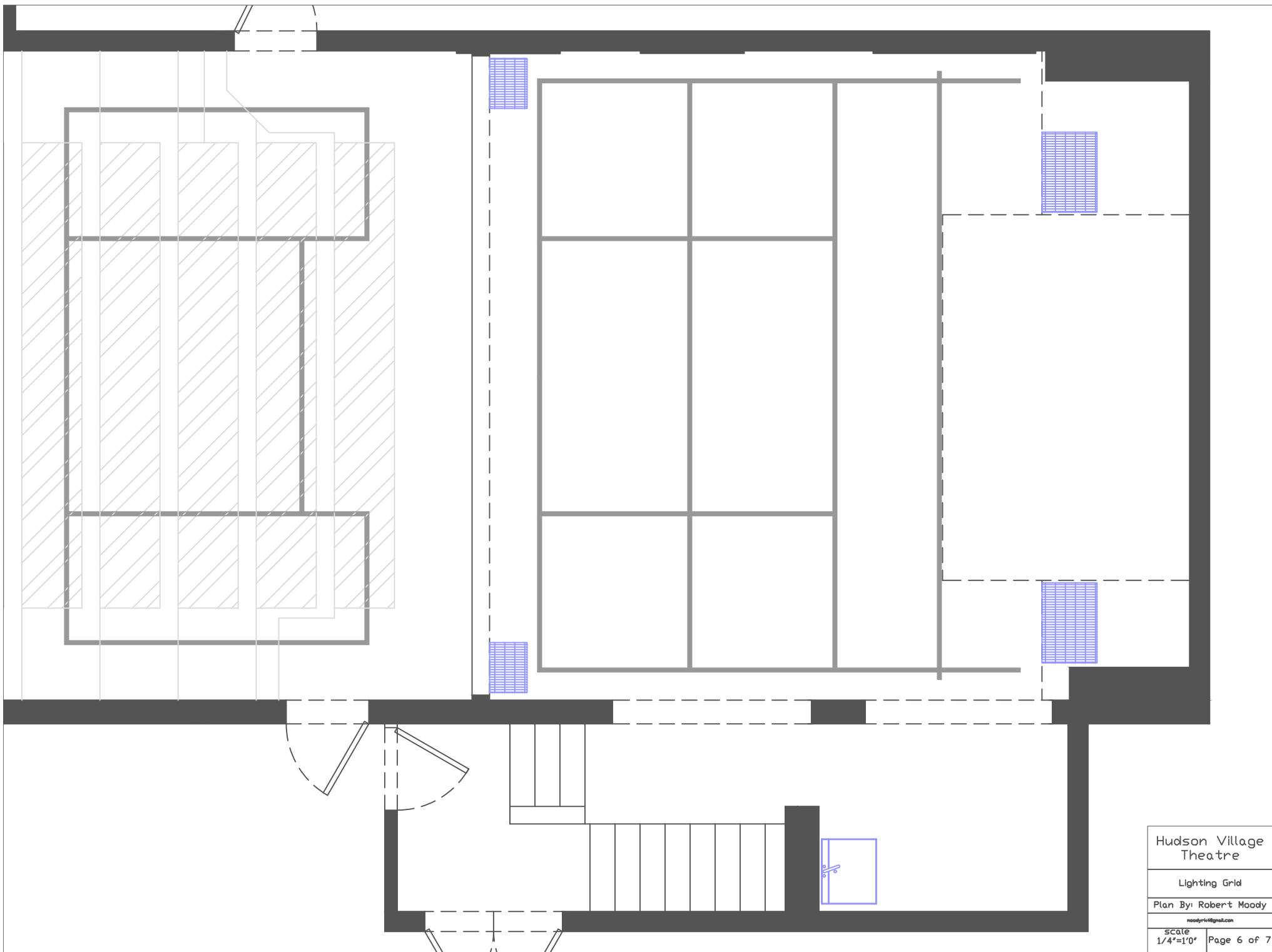
Cross Section Dimensions

Plan By: Robert Moody

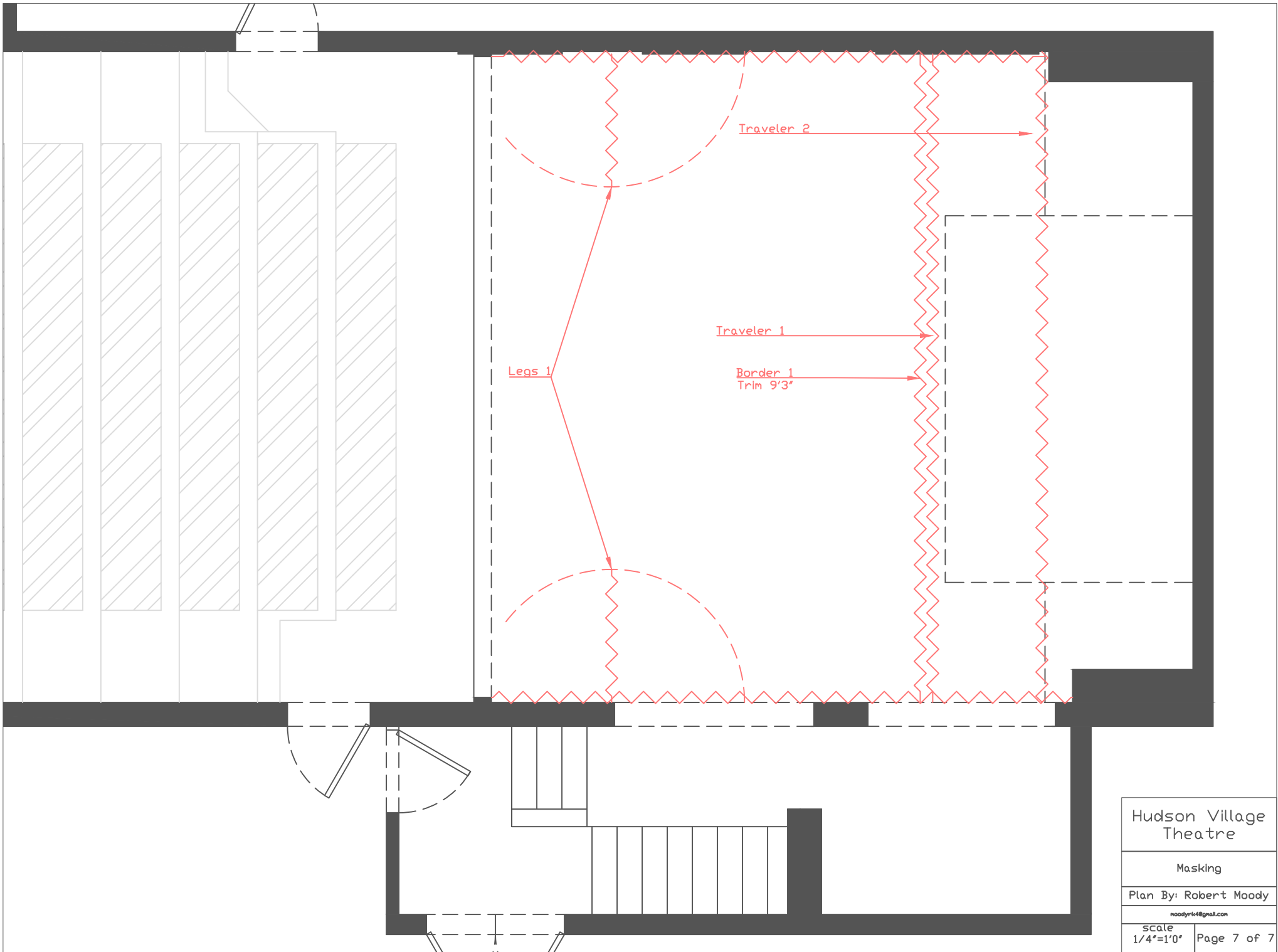
moodyrk4@gmail.com

scale
1/4"=1'0"

Page 5 of 7



Hudson Village Theatre	
Lighting Grid	
Plan By: Robert Moody	
<small>moodyrvt@gmail.com</small>	
Scale	Page 6 of 7
1/4"=1'0"	



Hudson Village Theatre	
Masking	
Plan By: Robert Moody	
moodyr4@gmail.com	
Scale 1/4"=1'0"	Page 7 of 7